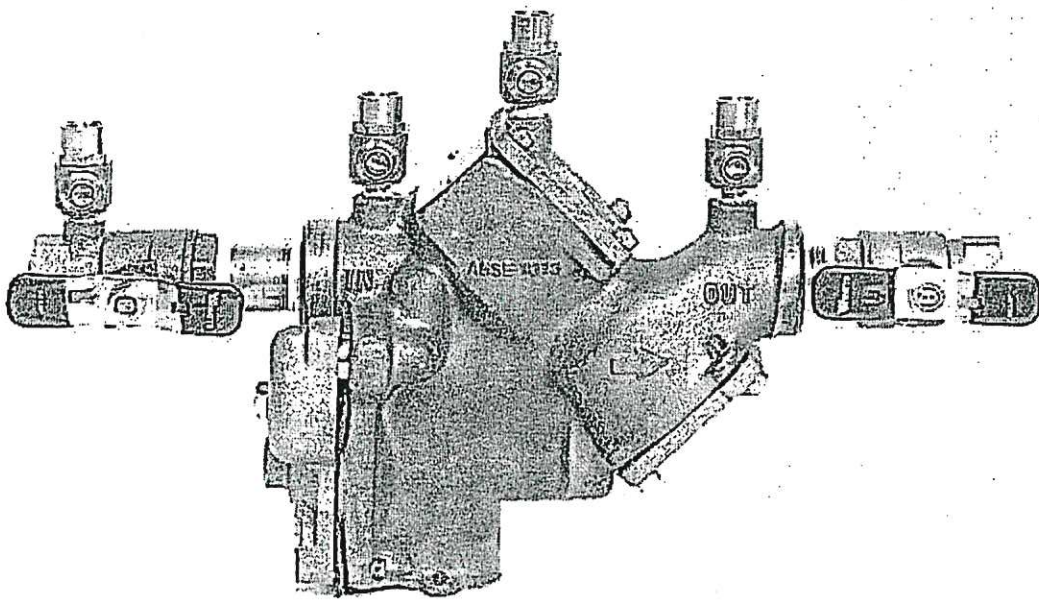


OTCO

BACKFLOW PREVENTION

REFRESHER MANUAL



OPERATOR TRAINING COMMITTEE OF OHIO, INC.
3972 INDIANOLA AVENUE
COLUMBUS, OHIO 43214-3158
(614) 268-6826 FAX (614) 268-3244
<http://www.ohiowater.org>

Gary Espenschied – gary.espy@yahoo.com

Revised: March 2012



Figure 23. An example of a reduced pressure principle detector assembly which consists of a full size reduced pressure principle backflow prevention assembly with a bypass line equipped with a meter to register flow and a bypass line-sized RP.

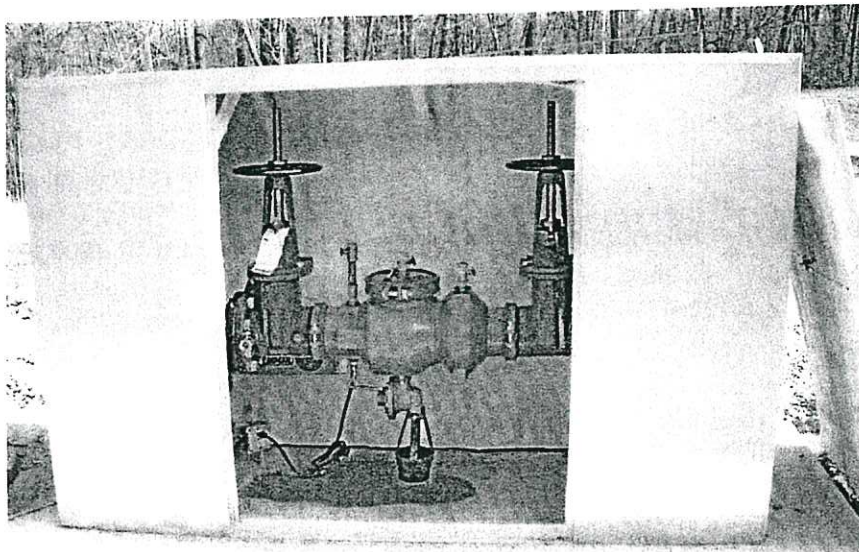


Figure 24. Picture of reduced pressure principle backflow prevention assembly installed in a heated enclosure. The relief valve has an air gap device attachment to prevent direct connection to the relief valve opening.

If the supply pressure drops below the minimum pressure that is required to close the relief valve, the pressure in the zone will be atmospheric, and the relief valve will remain fully open.

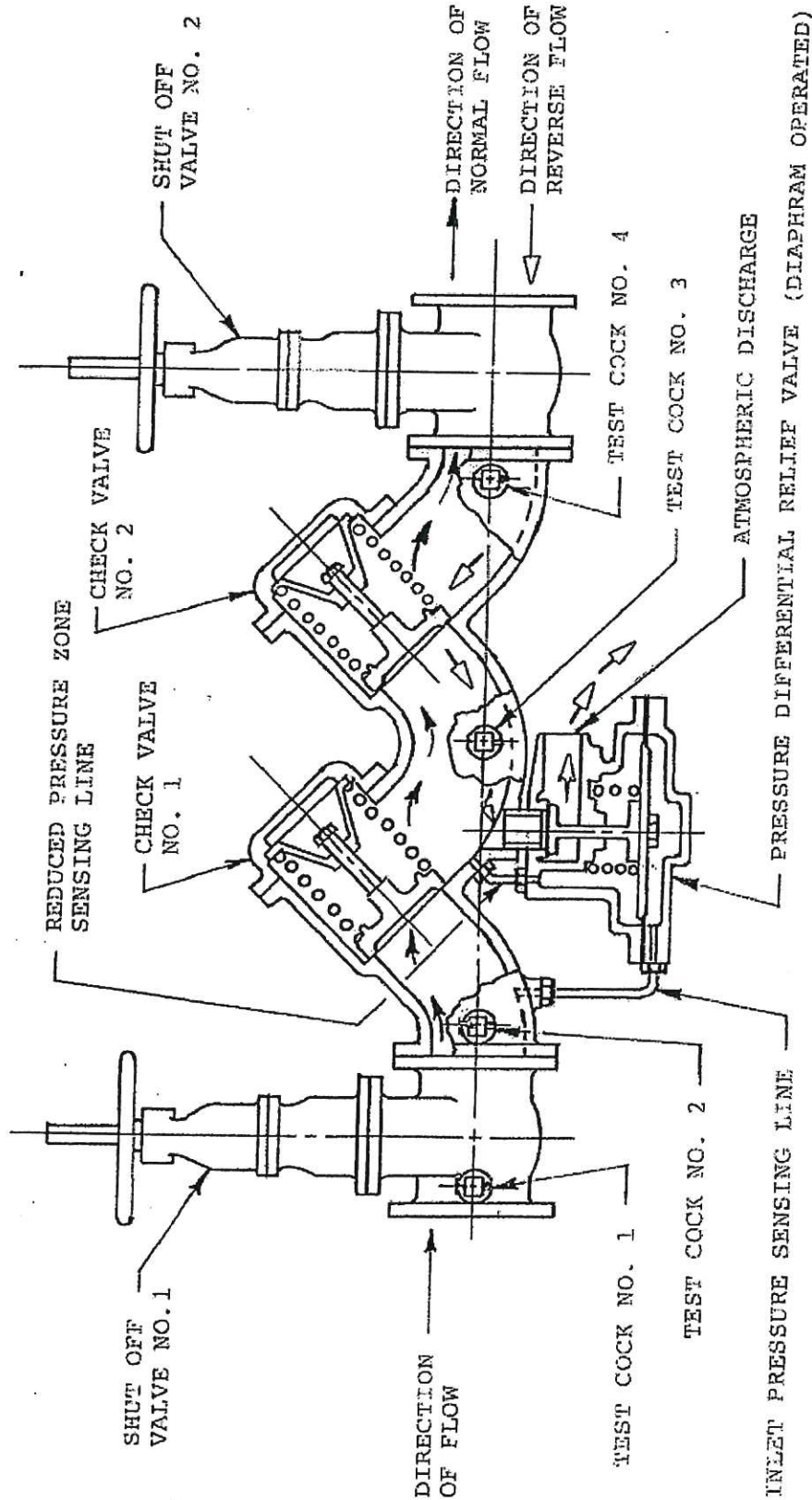


Figure 22 - Reduced Pressure Principle Backflow Prevention Assembly